

55
CAMPER &
MOTORHOMES
REVIEWED

**CAMPER-SIZED
COACHBUILT**
NEW FROM NU VENTURE



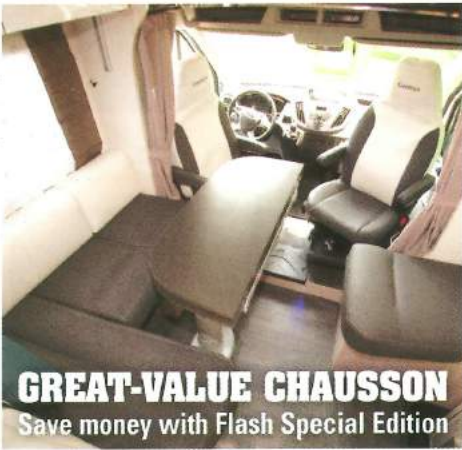
What motorhome

HELPING YOU BUY YOUR **PERFECT MOTORHOME**

MAY 2018 £3.95
whatmotorhome.co.uk

BARGAIN BUYS

STARTER 'VANS FROM £5K TO £20K



GREAT-VALUE CHAUSSON
Save money with Flash Special Edition

**NEW BAILEY
ADVANCE 70-6**
The 3.5-tonne six-berth



UNIQUE LAYOUT
Shire's new mid-lounge van conversion



Marquis extends Mobilvetta line-up to include low-profiles

New Kea P and K-Silver ranges join the K-Yacht Tekno Line (which gets UK-handed layouts for the first time)



Marquis Leisure, the UK importer for Mobilvetta motorhomes from Italy with 12 branches around Britain, has announced two new ranges, to join the existing trio of K-Yacht Tekno Line A-class models. The Mobilvetta Kea P is a high-spec low-profile range, while the K-Silver is a new A-class range that sits below the existing K-Yacht.

The Kea P (above) is based on a Fiat Ducato with 150bhp engine, automatic air-conditioning, sat-nav, rear view camera, ESP, Traction+ and 16in alloy wheels. There are three layouts: P65 with rear single beds over a garage (7.38m long), P67 (transverse rear double bed over a garage,

6.99m) and the island bed P68 (7.38m). Habitation area specification includes 12V underfloor heating plus Truma Combi 6 gas/electric blown-air heating, a solar panel, 150-litre fridge/freezer, a three-burner hob plus an oven/grill. The P67 and P68 models also come with an electric drop-down bed over the lounge.

Meanwhile, the K-Silver (below) introduces a Mobilvetta A-class at a lower price point than the K-Yacht Tekno Line. It is based on a 130bhp Fiat with ESP, Traction+ and alloy wheels as standard and the Comfort-Matic gearbox as an



option. It also comes with Eco Leather upholstery, a 150-litre fridge/freezer, an oven/grill and Combi 4 heating. Two 7.40m layouts are available: the i 56 with single beds and the i 59 with an island bed.

Marquis has also announced changes to ensure all the new models will have approval from UK trade body, the NCC (National Caravan Council). That includes alterations to current K-Yacht A-class

models, which will now have their entrance door on the UK nearside.

Marquis' Marketing Director, Andy Brand, explained: "NCC approval... means that customers know that their new model has been manufactured to the highest standards possible, thus giving peace of mind and the expectation of a higher residual value when they come to part exchange it."

