

ADRIA



C A R A V A N S

ADRIA





Inspiring your adventures.

OUR VISION IS FOR ADRIA TO
BECOME THE MOST DESIRABLE
RECREATIONAL VEHICLE BRAND.

ADRIA MOBIL HAS BEEN DESIGNING
AND MANUFACTURING CARAVANS
SINCE 1965, WITH OVER A HALF
A CENTURY OF EXPERTISE AND
PASSION APPLIED TO EVERY
VEHICLE.

ADRIA IS RECOGNISED BY
INDEPENDENT AWARDS FOR
DESIGN, INNOVATION, QUALITY AND
CUSTOMER SATISFACTION AND

OUR AIM IS TO INSPIRE YOU TO JOIN
THE EVER-GROWING COMMUNITY OF
ADRIA OWNERS, CREATING YOUR OWN
MEMORABLE EXPERIENCES.

We design and develop our leisure
vehicles by following these principles:

DESIGN

We aim to inspire with vehicles
designed for living, with great style,
practical use of space, comfort and a
feeling of well-being.

INNOVATION

We are committed to innovation, with
vehicles *designed to perform*, with
everything developed for your comfort
and enjoyment.

EXPERIENCE

Our vehicles are *designed for you*, with
a choice of models, layouts, features
and a selection of soft furnishings.

Adria. Inspiration for your adventures.

CONTENTS

ALPINA



6

ADORA



24

ALTEA



42

ACTION



54

Construction **60**

Climate-control **61**

Made in Slovenia **62**




A L P I N A

THE NEW GENERATION ALPINA. OUR FLAGSHIP, LUXURY CARAVAN RANGE, FOR USE ALL YEAR ROUND.

FITTED WITH THE HIGHEST LEVEL OF SPECIFICATION, THE DISTINCTIVE ADRIA AERODYNAMIC SILHOUETTE, AN EXTRA-LARGE PANORAMIC WINDOW, SPACIOUS AND LUXURIOUS INTERIOR DESIGN.

Designed for all year round comfort.

The image shows the interior of a motorhome at night. A large, L-shaped grey fabric sofa is the central feature, adorned with several colorful pillows in shades of teal, purple, and green. A patterned blanket is draped over one of the sofa's sections. In front of the sofa is a small, light-colored table with a few drinks and a small lamp. To the right, a kitchen area is visible, featuring a countertop with a sink, a stove, and various kitchen items. The interior is illuminated by warm, ambient lighting, and a large skylight at the top provides a view of the starry night sky. The overall atmosphere is cozy and modern.

Experience
with all your senses.

DESIGNED FOR LIVING

DESIGNED FOR LIVING

Our caravans are carefully designed to give you a great experience when away from home, with home from home touches and spacious, elegant interior design.

Alpina has an elegant **home-style feeling**, with a blend of contemporary and classic design, offering a stylish and comfortable living space.

- | **ATRIUM-STYLE LIVING** WITH ITS EXTRA-LARGE PANORAMIC WINDOW
- | **SOUND SYSTEM** WITH BLUETOOTH® AMPLIFIER
- | **ADJUSTABLE TEMPERATURE CONTROL** WITH ALDE HEATING AND UNDERFLOOR HEATING
- | **ORGANISED STORAGE** THROUGHOUT







DESIGNED FOR LIVING

Experience the **contemporary living spaces**.

The **living room** offers a great space to entertain featuring a comfortable sofa with elegant headrests and a light-weight folding table, for an easy additional bed set up.

- | DINETTE WITH **COMFORTABLE SEATING** AND A DEDICATED TV STATION
- | ELEGANT, ADJUSTABLE **HEADREST CUSHIONS**

Stylish and practical **kitchen** complete with a durable worktop, integrated 3 burner hob and sink design, elegant concave cupboards, spacious drawers, oven/grill, large fridge, microwave and high-quality appliances.

Everything is in the right place to prepare your meals and for entertaining.

- | ELEGANT AND SPACIOUS **CONCAVE CUPBOARDS**
- | **LARGE WORKTOP** WITH A REAL WOOD CHOPPING BOARD
- | **THREE BURNER HOB** AND INTEGRATED SINK
- | **ORGANISED WORKSPACE** WITH PLENTY OF STORAGE
- | **HIGH-QUALITY APPLIANCES**



All UK caravans come with an additional kitchen worktop extension (excluding Action).

Master **bedrooms** available in twin and double arrangements, for a great night's sleep. Featuring easy to access beds and fitted with premium quality mattresses.

Adjustable mood lighting and clever storage for personal things.

- | **QUALITY SPRUNG BEDS** IN A CHOICE OF LAYOUTS
- | **PREMIUM QUALITY MATTRESSES**
- | **ELEGANT STORAGE** SOLUTIONS
- | **ADJUSTABLE AMBIENT LIGHTING**





DESIGNED FOR LIVING

Daily rituals are a pleasure, with a well-lit and ventilated bathroom, designed for space and comfort.

Elegant **bathroom** design maximises the space and features a shower, toilet and large wash basin, with clever lighting, mirror and storage.

| LARGE WASH BASIN AND MIRROR

| ALDE TOWER FOR WARMTH AND COMFORT

| STORAGE FOR PERSONAL THINGS

| ELEGANT LIGHTING TO CREATE THE PERFECT AMBIANCE



Inspired solutions throughout for a more comfortable and organised living space.

Be comfortable

LIGHTING

Versatile lighting, includes LED, spot lights and ambient lights.

PREMIUM QUALITY MATTRESSES

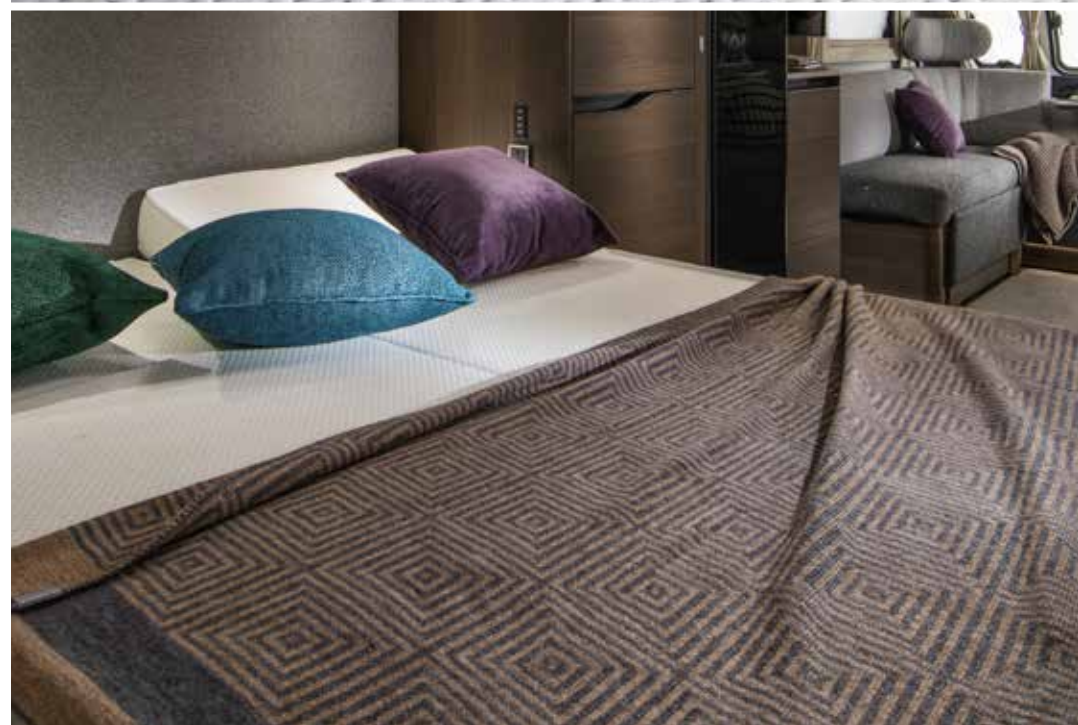
featuring Tencel® covers, provide great support with high-resistance foam construction, easy-care fabrics and natural protection against odours, bacteria and static.

ORGANISATION

Beautifully organised storage with large cupboards, wardrobes and innovative solutions in all living spaces.

SEATING

Relax with comfortable, supportive seating and headrests for extra comfort.





Be in control

MULTIMEDIA

Inspired solutions with an advanced easy-to-use digital control panel and a range of multimedia solutions including high-quality sound system with Bluetooth® amplifier and hidden speakers, TV bracket and multiple USB ports.



Performance and
comfort all year round.

DESIGNED TO PERFORM

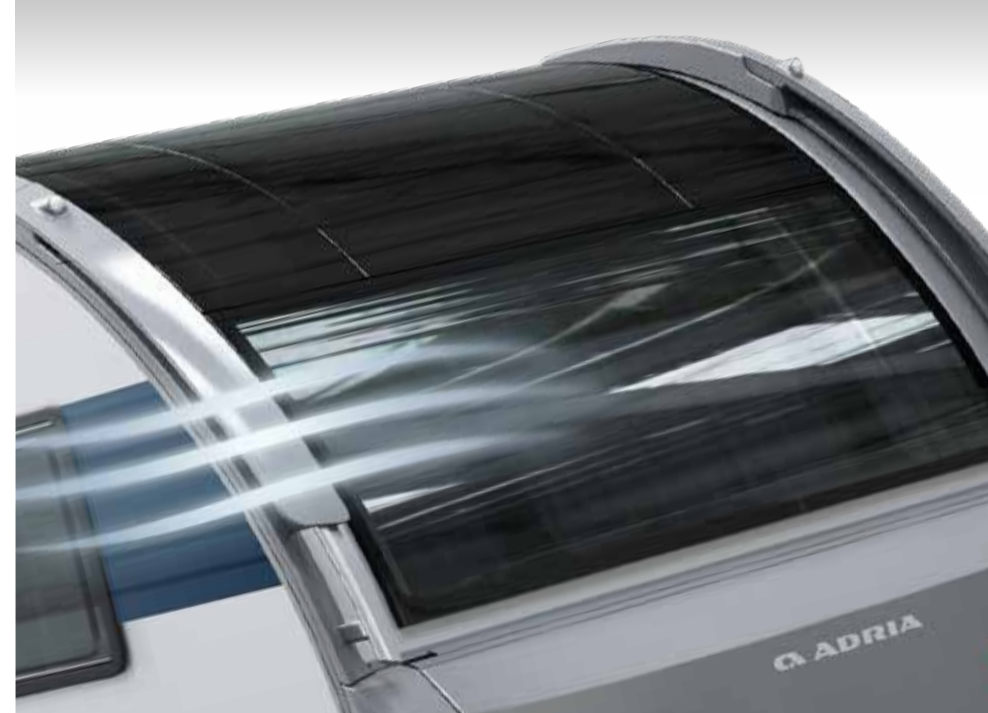
DESIGNED TO PERFORM

Inspired design vehicles for carefree enjoyment, practicality and comfort. Adria leads the way in caravan design.

Featuring aerodynamic profile and **Adria signature features**, for easier and more efficient towing.

- | **NEW GENERATION EXTERIOR** WITH AERODYNAMIC, ELEGANT DESIGN
- | **AIR-DIFFUSERS** ASSIST EASIER AND MORE EFFICIENT TOWING
- | **REAR WALL DESIGN** WITH FULL LED MULTIFUNCTIONAL LIGHTS
- | **PERFORMANCE CHASSIS** WITH AKS STABILISER AND ATC CONTROL
- | **PANORAMIC WINDOW** TO MAXIMISE NATURAL LIGHT, GAS ASSISTED OPENING
- | **AKS STABILISER**
- | **WIDE ENTRANCE DOOR** AND DOUBLE-GLAZED FLAT WINDOWS
- | **METAL GRAB HANDLES** FOR EASY MANOEUVRING
- | **SPACIOUS STORAGE** THROUGHOUT
- | **LED SILHOUETTE AWNING LIGHT** AS STANDARD
- | **ADRIA ALLOY WHEELS** WITH CONTINENTAL® TYRES

*Some features are range specific. Please check with your supplying dealership.



Your style,
your choice.

**DETAILS MAKE
THE DIFFERENCE**

A selection of **high-quality upholstery**
and cushion sets to compliment the
style and your personal taste.

UPHOLSTERY



URBAN GREYS

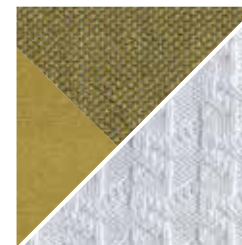


LEATHER CHARLES

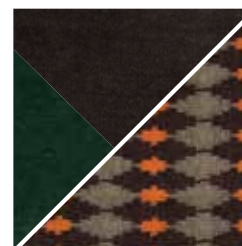
CUSHIONS



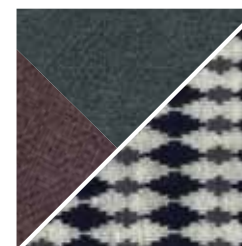
DREAM HARMONY



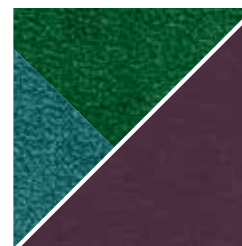
SUMMER VIBES



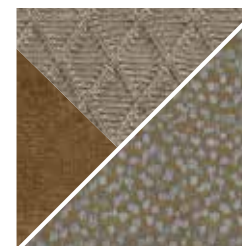
BROWNIES



GREY PLANET



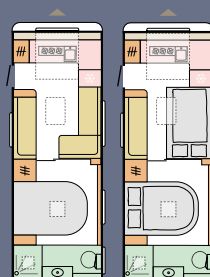
MYSTIC GARDEN



WARM BROWNS

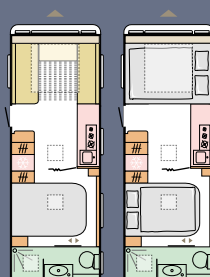
Layouts

Available in a choice of layouts, there is sure to be one to suit you.



RIO GRANDE

L	8297 mm
W	2460 mm
B	4



MISSISSIPPI

L	8297 mm
W	2460 mm
B	4



COLORADO

L	8260 mm
W	2460 mm
B	4



L = Length | W = Width | B = Berths

TECHNICAL DATA

For detailed specification and technical data please visit our website www.adria.co.uk
 Here you will find our product configurator, individual model specifications, layouts and more technical details. Note some features may not be available on all models.





A D O R A

THE AWARD-WINNING NEW GENERATION ADORA. OUR
BEST-SELLING CARAVAN RANGE IS DESIGNED AROUND YOU,
FOR EASY-LIVING AND MAXIMUM COMFORT.

FEEL AT HOME IN THE ELEGANT AND CONTEMPORARY LIVING
SPACE OF A CARAVAN PACKED WITH FEATURES.

Designed around you.

The image shows the interior of a motorhome, designed for living. It features a grey tufted sofa on the left and right, a kitchen area with a sink, stove, and oven in the center, and a living area with a television mounted on a white cabinet. The interior is finished with light wood paneling and has a modern, clean aesthetic. The lighting is warm and ambient, highlighting the textures of the furniture and the wood.

Experience
with all your senses.

DESIGNED FOR LIVING

DESIGNED FOR LIVING

Our caravans are carefully designed to give you a great experience when away from home, with open and spacious, elegant interiors.

Adora has an elegant **home-style feeling**, with contemporary interior design and a light and airy living space featuring the signature panoramic roof window.

- | EXTRA-LARGE PANORAMIC WINDOW ON ALL MODELS
- | SOUND SYSTEM WITH HIDDEN INTEGRATED BLUETOOTH® SPEAKERS
- | EFFICIENT HEATING CONTROL WITH ALDE HEATING
- | ORGANISED STORAGE THROUGHOUT







All Adora models feature a folding worktop extension.

DESIGNED FOR LIVING

Experience the **contemporary living spaces**.

The **living room** offers and great space to entertain along with comfortable sofas and elegant headrests. The light-weight fold away table enables easy additional bed set up.

- | THE **SIGNATURE PANORAMIC WINDOW** IS FITTED ON ALL MODELS AS STANDARD
- | DINETTE WITH **COMFORTABLE SEATING**
- | ELEGANT ADJUSTABLE **HEADREST CUSHIONS** FOR ADDITIONAL COMFORT
- | EASY TO ACCESS **STORAGE**

The practical **kitchen** offers durable worktop, 3 burner hob and sink design, oven & grill, large fridge, microwave, elegant concave cupboards, spacious soft close drawers and high-quality appliances.

Everything is in the right place for easy food and drink preparation and for entertaining.

- | ELEGANT AND SPACIOUS **CONCAVE CUPBOARDS**
- | ORGANISED **WORKSPACE AND STORAGE**
- | MULTIFUNCTIONAL **UTENSIL RACK WITH STORAGE SHELVES**
- | **HIGH-QUALITY APPLIANCES**



All UK caravans come with an additional kitchen worktop extension (excluding Action).

Master **bedroom** with all formats of bed, for a great night's sleep, featuring easy to access beds, featuring Premium Evopore® mattresses.

Adjustable lighting and storage for personal things.

- | **PREMIUM EVOPORE® MATTRESSES** AS STANDARD
- | **EASY TO ACCESS BEDS** WITH UNDER-BED STORAGE
- | **MULTIFUNCTIONAL PROFILE** WITH FELT POCKETS AND SHELVES
- | **BEDROOM DESIGNS**, WITH A RANGE OF BED LAYOUTS FOR A GREAT NIGHT'S SLEEP



Cashmere blankets not included.



DESIGNED FOR LIVING

Daily rituals are a pleasure, with a well-lit and ventilated bathroom, designed for space and comfort.

Our **bathroom** design, maximises the space, featuring a shower, toilet and wash basin, with good lighting, mirror and storage.

| ELEGANT LIGHTING TO CREATE A RELAXING SPACE



Inspired solutions throughout for a more comfortable and organised living space.

Be comfortable

LIGHTING

Versatile lighting, includes LED, spot lights and ambient lights.

PREMIUM EVOPORE® MATTRESSES

featuring Tencel® covers, provide great support with high-resistance foam construction, easy-care fabrics and natural protection against odours, bacteria and static.

ORGANISATION

Beautifully organised storage with large cupboards, wardrobes and innovative solutions in all living spaces.

SEATING

Relax with comfortable, supportive seating and headrests for extra comfort.





Performance and
comfort all year round.

DESIGNED TO PERFORM

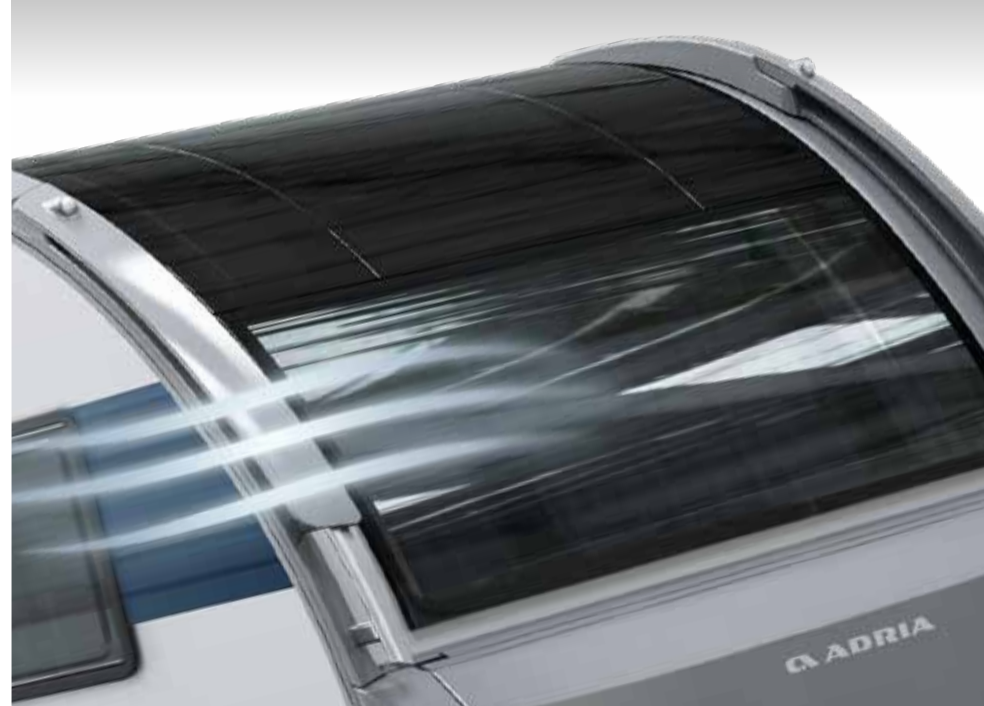


DESIGNED TO PERFORM

Inspired design vehicles for carefree enjoyment, practicality and comfort. Adria leads the way in caravan design.

Featuring an aerodynamic profile and **Adria signature features**, for easier and more efficient towing.

- | **NEW GENERATION EXTERIOR** WITH AN AERODYNAMIC AND ELEGANT DESIGN
- | **AIR-DIFFUSERS** AID TOWING EFFICIENCY
- | **REAR WALL DESIGN** WITH FULL LED MULTIFUNCTIONAL LIGHTS
- | **PERFORMANCE CHASSIS** FOR EASY AND SAFER TOWING
- | **AKS STABILISER**
- | **ADRIA ALLOY WHEELS** WITH CONTINENTAL® TYRES
- | **PANORAMIC WINDOW** ON ALL LAYOUTS
- | **WIDE ENTRANCE DOOR** AND DOUBLE-GLAZED FLAT WINDOWS
- | **GRAB HANDLES** FOR EASY MANOEUVRING
- | **LARGE STORAGE** FOR GAS BOTTLE AND MORE
- | **AWNING LIGHT**
- | **INTEGRATED AWNING PROFILE** FOR OUTDOOR LIVING



Your style,
your choice.

**DETAILS MAKE
THE DIFFERENCE**

A selection of **high-quality upholstery**
and cushion sets to compliment the
style and your personal taste.

UPHOLSTERY



STONE ISLAND

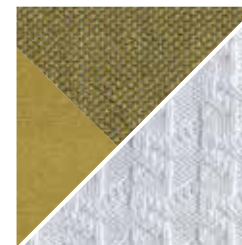


MISTY ROSE

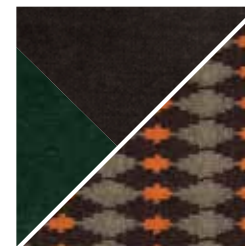
CUSHIONS



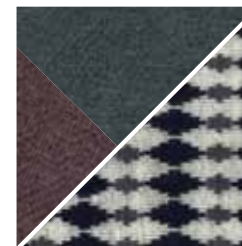
DREAM HARMONY



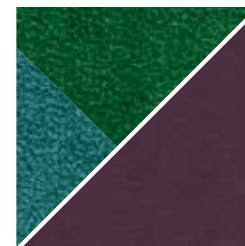
SUMMER VIBES



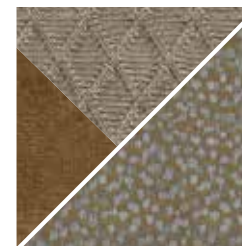
BROWNIES



GREY PLANET



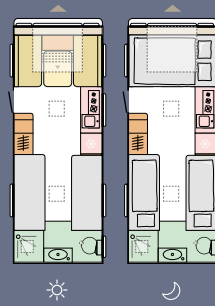
MYSTIC GARDEN



WARM BROWNS

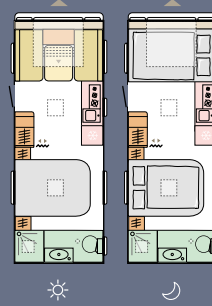
Layouts

Available in a choice of layouts, there is sure to be one to suit you.



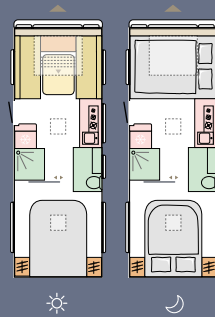
SEINE

L	8190 mm
W	2299 mm
B	5



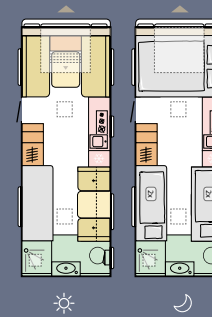
ISONZO

L	8278 mm
W	2460 mm
B	4



TIBER

L	8244 mm
W	2460 mm
B	4



SAVA

L	8244 mm
W	2460 mm
B	6

L = Length | W = Width | B = Berths

TECHNICAL DATA

For detailed specification and technical data please visit our website www.adria.co.uk
 Here you will find our product configurator, individual model specifications, layouts and more technical details. Note some features may not be available on all models.





ADRIA

ALTEA

A L T E A

THE NEW GENERATION ALTEA. OUR BEST-SELLING RANGE OF
MODERN, LIGHTWEIGHT AND CONTEMPORARY CARAVANS, DESIGNED
FOR LIGHTER, BRIGHTER LIVING.

CARAVANS, WITH LIGHT AND BRIGHT HOME-STYLE INTERIORS FOR
EASY-LIVING, MAXIMUM COMFORT AND PRACTICAL USE OF SPACE.

Designed for lighter, brighter living.



Experience
with all your senses.

DESIGNED FOR LIVING

DESIGNED FOR LIVING

Our caravans are carefully designed to give you a great experience when away from home, with spacious, practical and comfortable interiors.

Altea has a **home-style feeling**, with modern stylish interior and a light and bright, welcoming ambiance.

- | LIGHTWEIGHT AND ROBUST STYLISH FURNITURE
- | SYMALITE® WALL LININGS FOR A MORE COSY FEELING
- | ADJUSTABLE TEMPERATURE CONTROL WITH TRUMA HEATING
- | ORGANISED STORAGE THROUGHOUT







DESIGNED FOR LIVING

Experience the **contemporary living spaces**.

The elegant **living room** offers open plan living, with a comfortable dinette, a light-weight put-away table and easy additional bed set up.

- | **LARGE FRONT AND SIDE WINDOWS** TO MAXIMISE NATURAL LIGHT
- | DINETTE WITH **COMFORTABLE SEATING** AND STORAGE
- | **FLEXIBLE DINETTE** WITH A FOLD AWAY TABLE
- | **INNOVATIVE STORAGE** SOLUTIONS

Fully equipped and practical **kitchen** with durable worktop, hob and sink design, oven/grill, microwave, elegant concave cupboards, large capacity drawers and high-quality appliances.

Everything is in the right place for food and drink preparation and for entertaining.

- | PLENTY OF STORAGE DRAWERS AND CUPBOARDS
- | PLENTY OF STORAGE AND INTEGRATED SINK
- | ORGANISED WORKSPACE AND STORAGE
- | HIGH-QUALITY APPLIANCES



All UK caravans come with an additional kitchen worktop extension (excluding Action).



Comfortable **bedroom** options for a great night's sleep, featuring easy to access beds and premium quality mattresses.

Controllable lighting and storage for personal things.

- | PREMIUM QUALITY MATTRESSES
- | MULTIFUNCTIONAL RAIL WITH FELT POCKETS AND SHELVES
- | TWIN BEDS, SINGLE BEDS AND BUNK BEDS
- | OPTIONAL PET BED (DOGGY MAT)



Daily rituals are a pleasure, with a well-lit and ventilated bathroom, designed for space and comfort.

Our **bathroom** design, maximises the space, featuring a shower, toilet and wash basin, with good lighting, mirror and storage.

| INNOVATIVE STORAGE FOR PERSONAL THINGS

| EFFICIENT DRAINING AND SERVICE ACCESS

| ELEGANT LIGHTING FOR A RELAXING ATMOSPHERE



Inspired solutions throughout for a more comfortable and organised living space.

Be comfortable, be in control.

LIGHTING

Versatile lighting, includes LED, spot lights and ambient lights.

PREMIUM QUALITY MATTRESSES

featuring Tencel® covers, provide great support with high-resistance foam construction, easy-care fabrics and natural protection against odours, bacteria and static.

ORGANISATION

Plenty of innovative storage solutions in all living spaces.

SEATING

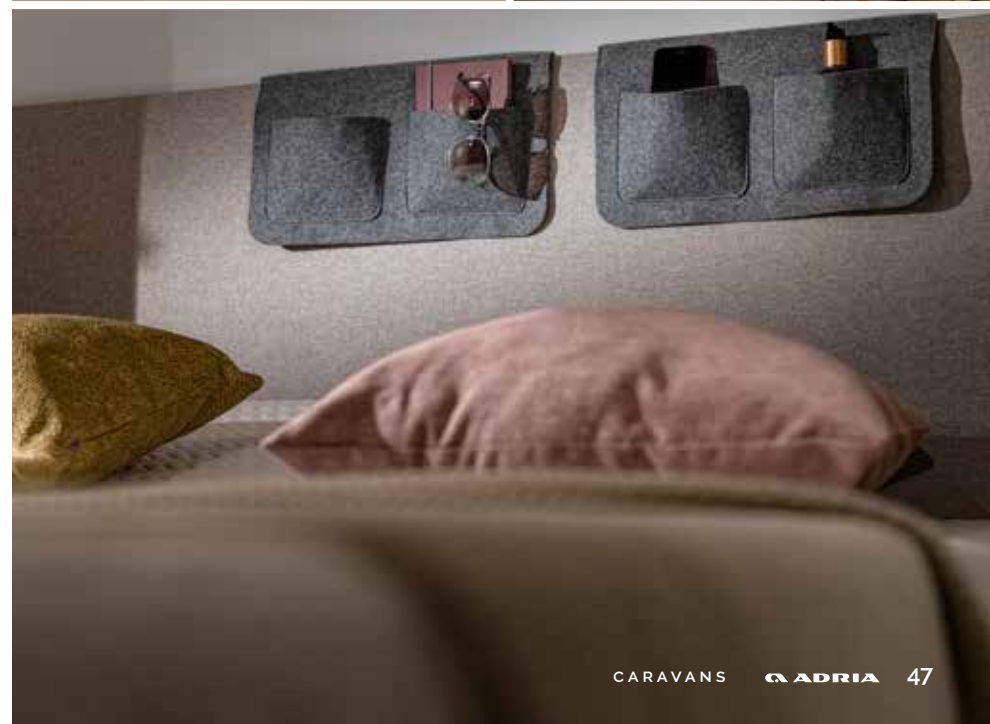
Relax with comfortable and supportive seating.

PET FRIENDLY

Stable Door and optional doggy bed.

MEDIA

Advanced easy-to-use digital control panel and a range of multimedia solutions including TV point and holder and multiple USB ports.



A silver Adria Altea motorhome is parked in a grassy field with a dense forest in the background. The motorhome is shown from a rear three-quarter view, highlighting its sleek design and large windows. A white SUV is partially visible behind it. The scene is brightly lit, suggesting a sunny day.

Performance and
comfort all year round.

DESIGNED TO PERFORM

DESIGNED TO PERFORM

Inspired design vehicles for carefree enjoyment, practicality and comfort, Adria leads the way in caravan design.

Featuring aerodynamic profile and **Adria signature features**, for easier and more efficient towing.

| **NEW GENERATION EXTERIOR** WITH AERODYNAMIC, ELEGANT DESIGN

| **NEW CONSTRUCTION** FEATURING SYMALITE® AND SOLID THERMOPLASTIC PANELS

| **LARGE FRONT AND SIDE WINDOWS** MAXIMISING NATURAL LIGHT

| **REAR WALL DESIGN** WITH MULTIFUNCTIONAL LED LIGHTS

| **PERFORMANCE CHASSIS** BY AL-KO

| **SMOOTH GRP BODY** WITH DENT RESISTANCE

| **GRAB HANDLES** FOR EASY MANOEUVRING

| **AWNING LIGHT**

| **INTEGRATED AWNING PROFILE** FOR OUTDOOR LIVING

| **ADRIA ALLOY WHEELS**



Your style,
your choice.

**DETAILS MAKE
THE DIFFERENCE**

A selection of **high-quality upholstery**
and cushion sets to compliment the
style and your personal taste.

UPHOLSTERY

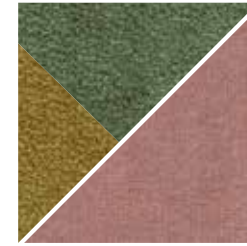


SELENA

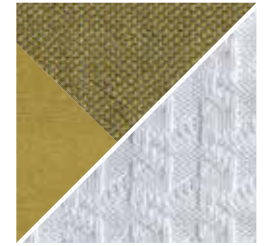


AMBER

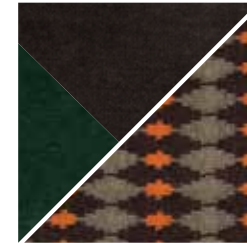
CUSHIONS



DREAM HARMONY



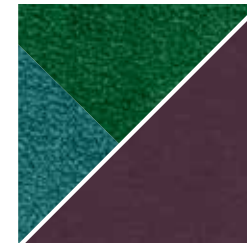
SUMMER VIBES



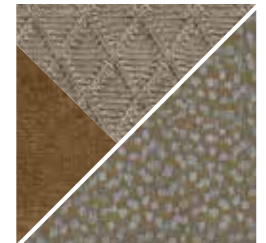
BROWNIES



GREY PLANET



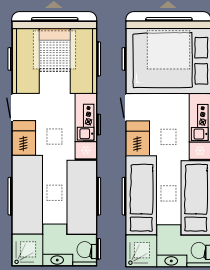
MYSTIC GARDEN



WARM BROWNS

Layouts

Available in a choice of layouts, there is sure to be one to suit you.



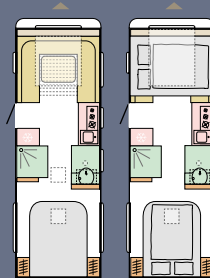
TYNE

L	8248 mm
W	2299 mm
B	4



AVON

L	8288 mm
W	2299 mm
B	6



DART

L	8260 mm
W	2299 mm
B	4



L = Length | W = Width | B = Berths

TECHNICAL DATA

For detailed specification and technical data please visit our website www.adria.co.uk
 Here you will find our product configurator, individual model specifications, layouts and more technical details. Note some features may not be available on all models.





A C T I O N

THE TRULY ORIGINAL ACTION. OUR ICONIC, TRENDSETTING,
AND LIGHTWEIGHT CARAVAN RANGE DESIGNED TO MAKE YOU SMILE.

COMPACT IN SIZE, WITH FLEXIBLE LIVING SPACES AND SMART
EVERYDAY PRACTICALITY AND LOVABLE COMFORT.

Love the new original.

Experience
with all your senses.

DESIGNED FOR LIVING

DESIGNED FOR LIVING

A truly **original design** with an interior which feels much bigger than the exterior perspective, thanks to the smart use of space. Experience flexible, practical, and comfortable living, in this much admired and loved caravan.

Love the well-organised **living space**, where the dinette, kitchen and bathroom provide flexible living, with a light and airy feeling.

The flexible dinette features comfortable seating and fully adjustable table, allowing easy conversion for **sleeping for 2** people, even accommodation for a family of 4 people in a new layout

| OPEN LIVING SPACE WITH A LARGE **PANORAMIC WINDOW**

| LOUDSPEAKER WITH **BLUETOOTH®** AMPLIFIER AND USB PORTS

| ADJUSTABLE **TEMPERATURE CONTROL** WITH TRUMA HEATING

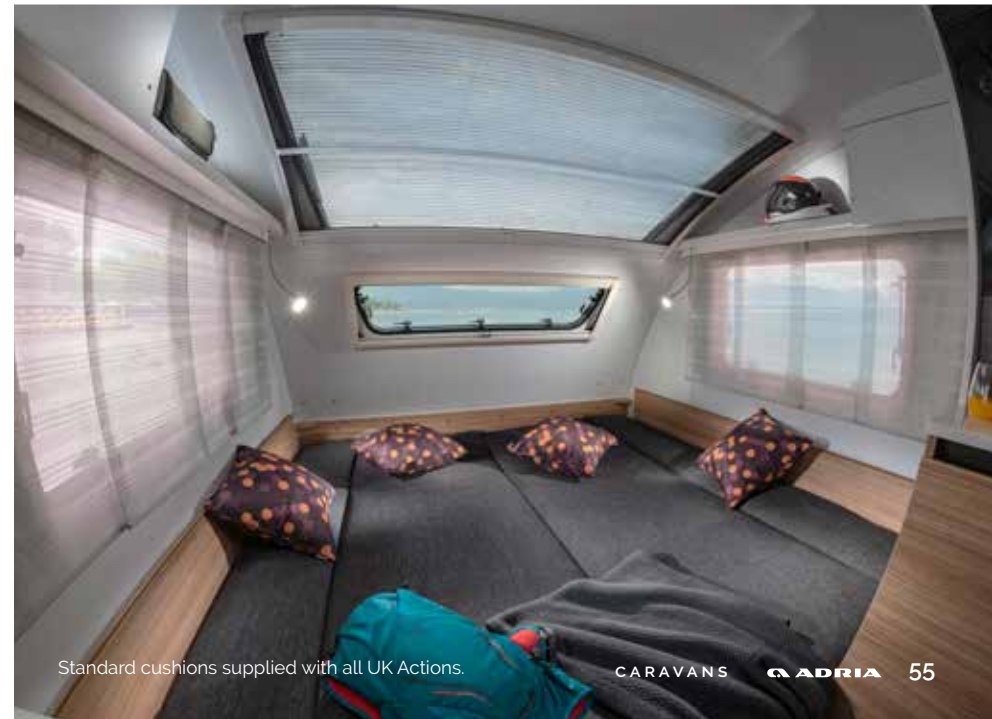
| **ORGANISED AND EASY TO ACCESS STORAGE** THROUGHOUT

| DINETTE WITH **COMFORTABLE SOFA-STYLE SEATING**

| ADJUSTABLE AND LIGHT PUT-AWAY TABLE WITH **EASY BED MAKE UP**

| **SLEEPING FOR UP TO 4 PEOPLE** (MODEL DEPENDENT)

| **CONTROLLABLE LIGHTING** FOR A RELAXING ATMOSPHERE



Inspired and practical smart **kitchen** with everything in the right place for food and drink preparation.

Equipped with an oven/grill, hob, sink and spacious fridge.



- | **2 GAS BURNER** WITH AN INTEGRATED SINK
- | KITCHEN STORAGE WITH **INTEGRATED SHELVES**
- | **ORGANISED WORKSPACE** AND STORAGE
- | **HIGH-QUALITY** APPLIANCES
- | **FOLDING SINK** (IN BATHROOM) TO MAXIMISE SPACE

- | **ELEGANT LIGHTING** FOR A RELAXING ATMOSPHERE
- | STORAGE
- | LIGHTING



Inspired solutions throughout for a more comfortable and organised living space.

Be comfortable, be in control.

LIGHTING

Versatile lighting, includes LED, spot lights and ambient lights.

PREMIUM QUALITY MATTRESSES

featuring Tencel® covers, provide great support with high-resistance foam construction, easy-care fabrics and natural protection against odours, bacteria and static.

ORGANISATION

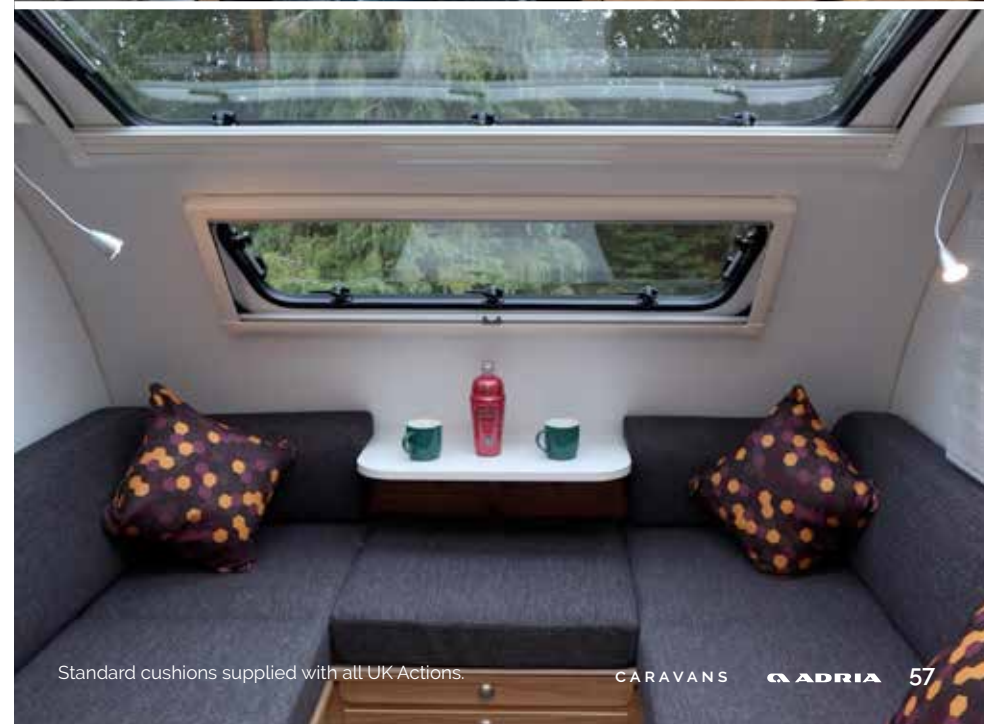
Plenty of innovative storage solutions in all living spaces.

SEATING

Relax with comfortable and supportive seating.

MULTIMEDIA

Easy-to-use digital control panel and a Bluetooth® amplifier sound system with loudspeakers, TV point and holder and USB ports.



Standard cushions supplied with all UK Actions.

CARAVANS

ADRIA

57

Your style,
your choice.

**DETAILS MAKE
THE DIFFERENCE**

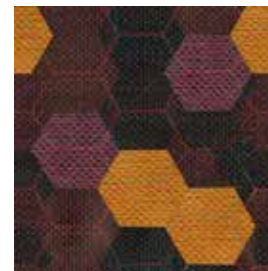
A selection of **high-quality upholstery**
and cushion sets to compliment the
style and your personal taste.

UPHOLSTERY



BRUNELLO BLACK

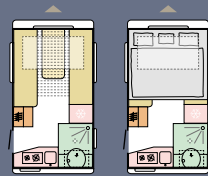
CUSHIONS



BRUNELLO BLACK

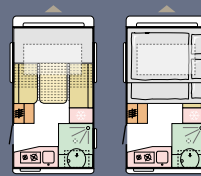
Layouts

Available in a choice of layouts, there is sure to be one to suit you.



361 LT

L	5215 mm
W	2196 mm
B	2



391 PT

L	5970 mm
W	2196 mm
B	4



L = Length | W = Width | B = Berths

TECHNICAL DATA

For detailed specification and technical data please visit our website www.adria.co.uk
Here you will find our product configurator, individual model specifications, layouts and more technical details. Note some features may not be available on all models.





DESIGNED TO PERFORM

Construction

Robust **body construction** and chassis integration for safer handling and optimum weight management, with **AL-KO and Knott** as our chassis partners (model and layout dependent). The combined solution of durable GFK body and performance chassis means reliable long-term performance.

With the clean lines and inspired solutions based on aerodynamic principles of our new generation caravans, experience improved air-flow and lower resistance when towing, for more efficiency.

Exclusively on Alpina caravans, Adria's unique **Complex body construction** combines the torsional strength of wood, the durability of polyurethane and the moisture-stopping properties of polyester giving reliable long-term durability and performance.

01 **COMPOSITE WOOD PANEL**

02 **POLYURETHANE SEALANT**

03 **EPS STYROFOAM**

04 **DENT RESISTANT POLYESTER
BODY SHELL**

05 **REINFORCED HARDWOOD PROFILE**

06 **XPS STYROFOAM INSULATION FOAM**

Climate-control

Built to **Adria Thermo-build** standards with advanced insulation materials and precision-engineered air-flow system to guarantee your comfort. Tested in our own climate chamber under **extreme conditions** from -40 to +60 degrees and humidity from 45 % to 80 %.

Optimal heating distribution within all living spaces with Adria expertise engineering and integrated **Truma** hot air or **Alde** liquid central heating system (model dependent).



Made in Slovenia

Adria Mobil are committed to **sustainable development, preventing and reducing environmental impacts**, our environmental management system is certified to ISO14001. Our vehicles are manufactured at our state-of-the-art ISO 9001 EFQM 5 Star certified manufacturing facilities in Slovenia, using world-class manufacturing techniques for durability, reliability and premium quality.

'THE LARGEST, MOST MODERN RECREATIONAL VEHICLE MANUFACTURING FACILITIES UNDER ONE ROOF, IN EUROPE'

Vehicles are supplied with a class-leading warranty, a comprehensive parts supply and aftersales service from our extensive Adria dealer network.

2_ Year Adria warranty

10_ Year* Adria Water Ingress warranty

*Terms and conditions apply see our website for details.



**I FEEL
SLOVENIA**

Slovenia
Your caravanning destination
www.slovenia.info

Inspiration for *your* adventures.



FIND YOUR INSPIRATION at www.adria.co.uk

Join us    and share your adventures.

**ADRIA CONCESSIONAIRES LTD.**

Drury drive
Sudbury
Suffolk
CO10 1WH

Email: team@adria.co.uk
Website: www.adria.co.uk

Printed and published: September 2023

Notices: The purpose of the catalogue is illustrative. Pictures inside the catalogue may include some elements not belonging to standard equipment or portray to products belonging to different markets. Products may change from technical or commercial points of view and in respect of regulations. Please contact your selected Adria dealer to obtain detailed information before purchasing.

Published by: Adria Mobil, d.o.o.; Art Direction: PM2; Production: Enigma d.o.o.; Photography: Branko Čeak, Jože Maček, Jure Horvat, Styling: Nataša Mandelj Čeak; Cover photo: Branko Čeak; Lifestyle photos: Francesco Zanet, Simone Benedetti, CJ Studio d.o.o., Shutterstock, iStock, themediumgray.com; Styling: PM2, Claudia Barberi. Renders: Inpac d.o.o.; Copy: Neil Morley; Lithography: Tomo Per; Thanks to: Müller, Amfibija, My Dream Journey, Malí raj; Printed by: Florjančič tisk d.o.o.